

Nova

Space Patrol Luluco

Kenichiro Suehiro

Transcription by danny z

♩ = 104

mf

Measures 1-4 of the piece. The key signature is one sharp (F#) and the time signature is 4/4. The tempo is marked as quarter note = 104. The dynamics are marked as mezzo-forte (mf). The melody in the right hand starts with a quarter note G4, followed by eighth notes A4, B4, and C5, then a quarter rest, a half note B4, and a quarter note A4. The bass line starts with a quarter note G3, followed by eighth notes F#3, E3, and D3, then a quarter rest, a half note C3, and a quarter note B2.

5

Measures 5-8 of the piece. The melody continues with a quarter note G4, followed by eighth notes A4, B4, and C5, then a quarter rest, a half note B4, and a quarter note A4. The bass line continues with a quarter note G3, followed by eighth notes F#3, E3, and D3, then a quarter rest, a half note C3, and a quarter note B2.

9

Measures 9-12 of the piece. The melody continues with a quarter note G4, followed by eighth notes A4, B4, and C5, then a quarter rest, a half note B4, and a quarter note A4. The bass line continues with a quarter note G3, followed by eighth notes F#3, E3, and D3, then a quarter rest, a half note C3, and a quarter note B2.

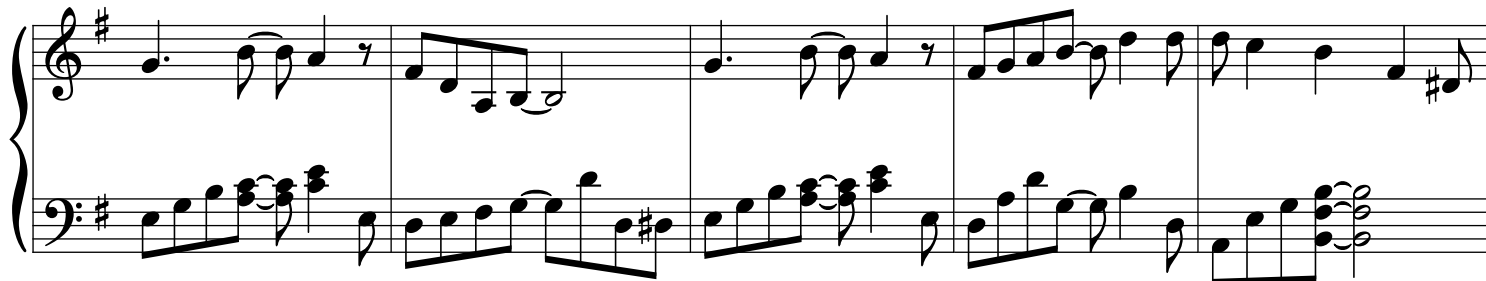
13

Measures 13-16 of the piece. The melody continues with a quarter note G4, followed by eighth notes A4, B4, and C5, then a quarter rest, a half note B4, and a quarter note A4. The bass line continues with a quarter note G3, followed by eighth notes F#3, E3, and D3, then a quarter rest, a half note C3, and a quarter note B2.

17



21



26

